



NORTH AMERICAN HYDRAULICS



Solution Providers



**Established in 1975
Hydraulic Components**

**World Class Manufacturers
Power Transmission Products**

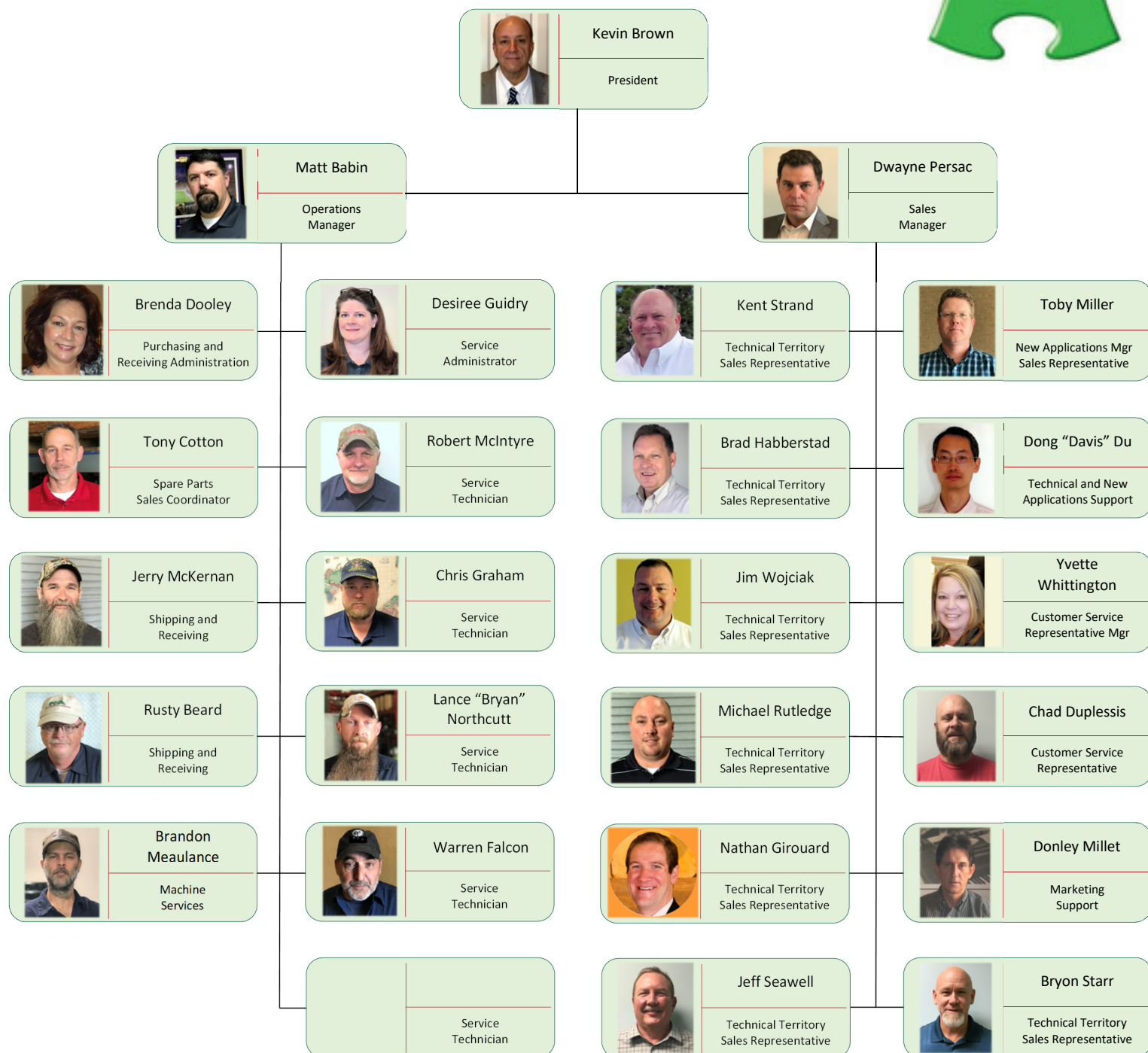


About NAHI

Motors • Pumps • Gearboxes • Valves • Controls • Power Units

NAHI, LLC MAIN OFFICE – 11549 SUNBELT COURT, BATON ROUGE LA • 225-751-0500 • www.nahi.com

D190718





NORTH AMERICAN HYDRAULICS

Solution Providers



Established in 1975
Hydraulic Components

World Class Manufacturers
Power Transmission Products



Compact Power Dense Solutions

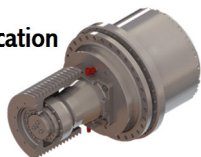
Motors • Pumps • Gearboxes • Valves • Controls • Power Units

NAHI, LLC MAIN OFFICE – 11549 SUNBELT COURT, BATON ROUGE LA • 225-751-0500 • www.nahi.com

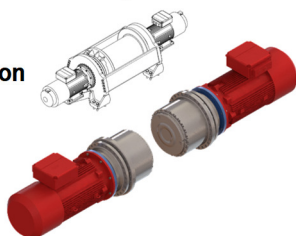
D190715



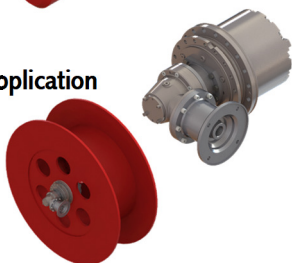
O&K Drive
Demanding Cutter Drive Application



O&K Drive
Winch Drive Application



O&K Drive
Cable Winch Drive Application



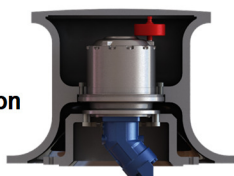
O&K Drive
Wheel Drive Application



O&K Drive
Wheel Drive Application



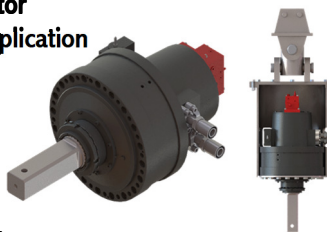
O&K Drive
Capstan Winch Application



O&K Winch Gearbox
Winch Drive Package
One Piece Rigid Frame
Integrated Valve



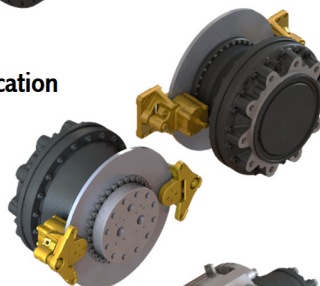
Black Bruin Motor
Auger Drive Application



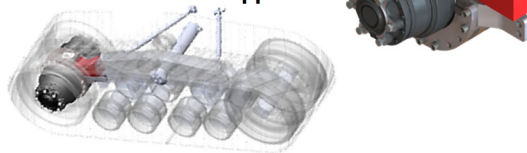
Black Bruin Motor
Auger Drive Application



Black Bruin Motor
Wheel Drive Application



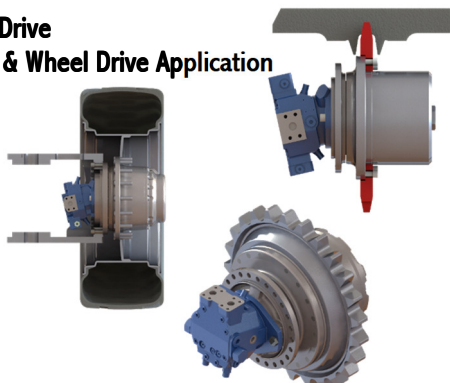
Black Bruin Motor
Drive Axle for Track Application



Black Bruin
Custom Drive Axle



Final Drive
Track & Wheel Drive Application



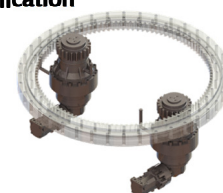
Planetary Drive
Belt Conveyor Drive Application



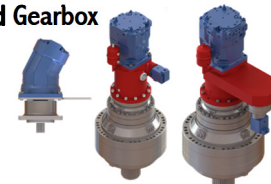
Planetary Drive
Final Drive Combined with
Shaft Input Application



Planetary Drive
Slewing Drive Application



Custom Drive
Two Speed Gearbox



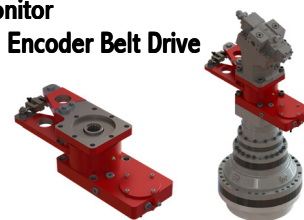
Custom Drive
Special Drive
Crusher
Application

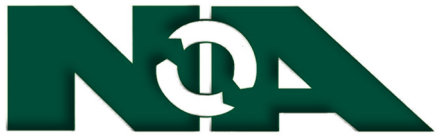


Black Bruin Motor
Integrated Single
Stage Planetary
Gearbox



Torque Monitor
Integrated Encoder Belt Drive





NORTH AMERICAN HYDRAULICS

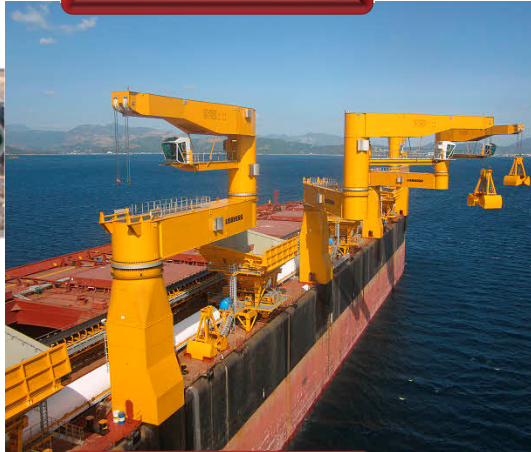
Solution Providers



Agriculture



Marine



Utility



Construction



Mining



Forestry



Railway

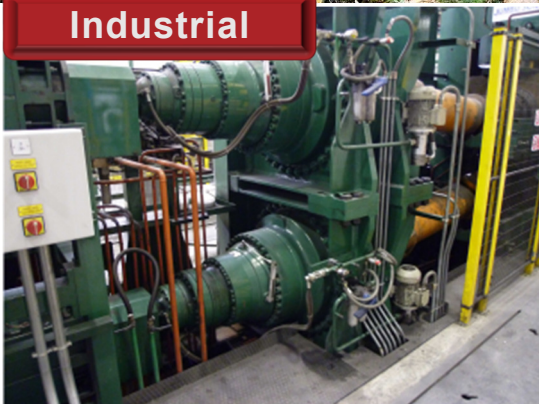


Oil and Gas

**Waste and
Material Handling**



Industrial



NAHI, LLC – CUSTOMER SERVICE • 225-751-0500 • www.nahi.com

D190721



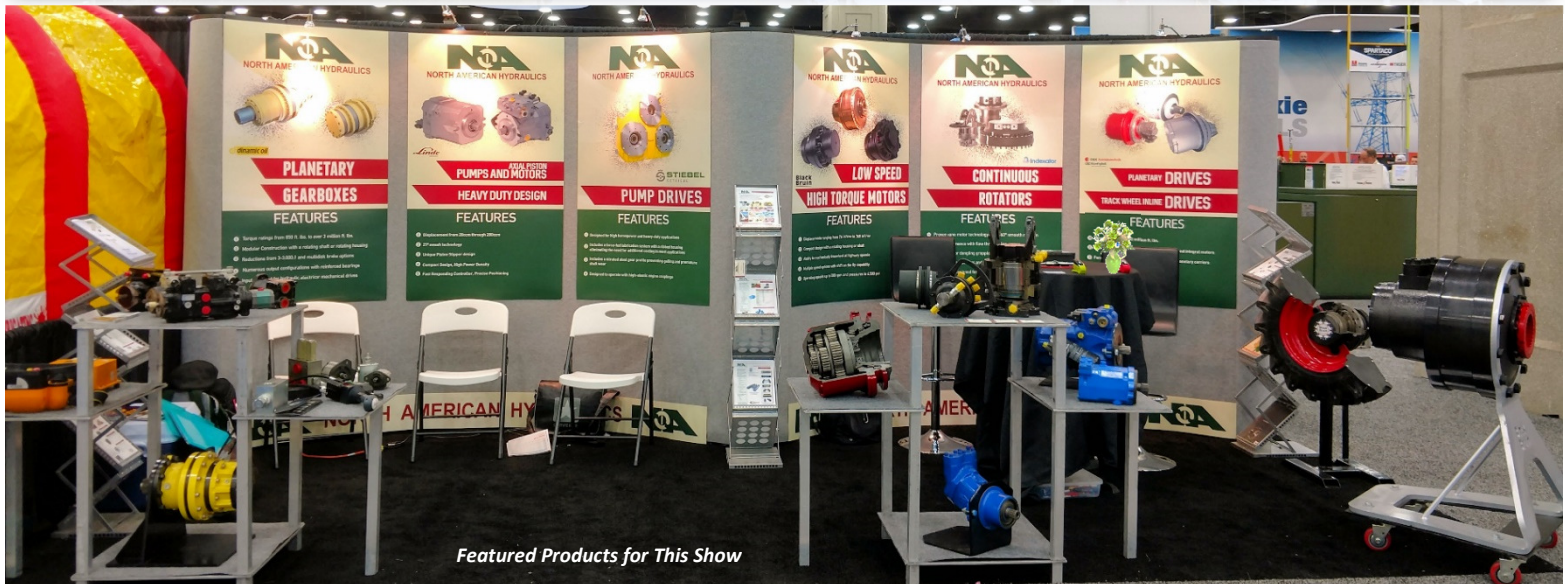
NORTH AMERICAN HYDRAULICS

The International Construction & Utility Equipment Exposition, is the premier event for utility professionals and construction contractors seeking comprehensive insights into the latest industry technologies, innovations and trends.

Explore and go hands-on with the latest utility products, heavy equipment & innovations from the industry leaders.

DEMO
ICUEE
EXPO

Markets



Featured Products for This Show



NORTH AMERICAN HYDRAULICS

This is where producers from all over gather, meet, and learn. This is where major manufacturers choose to roll out their newest offerings. This is where Ag families take a break from their daily routine to immerse themselves in the wider Ag community. This is where tradition and business have come together for 64 years. This is where we celebrate agriculture.



**FARM
PROGRESS
SHOW.**

Solution Providers

Motors • Pumps • Gearboxes • Valves • Controls • Power Units

NAHI, LLC MAIN OFFICE – 11549 SUNBELT COURT, BATON ROUGE LA • 225-751-0500 • www.nahi.com



From contractors to dealers and distributors, service providers, engineers, and producers, CONEXPO-CON/AGG brings construction professionals from across all disciplines. No other show's attendees represent more sectors of the construction industry than CONEXPO-CON/AGG.



Solution Providers

Featured Products for This Show



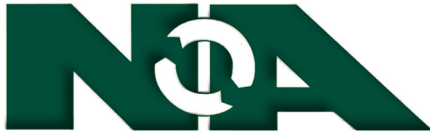
Motors • Pumps • Gearboxes • Valves • Controls • Power Units

NAHI, LLC MAIN OFFICE – 11549 SUNBELT COURT, BATON ROUGE LA • 225-751-0500 • www.nahi.com



- \$9 Million in Readily Available Inventory
- 25,000 Square Foot Building
- Headquartered in Baton Rouge, LA
- Drop Shipments





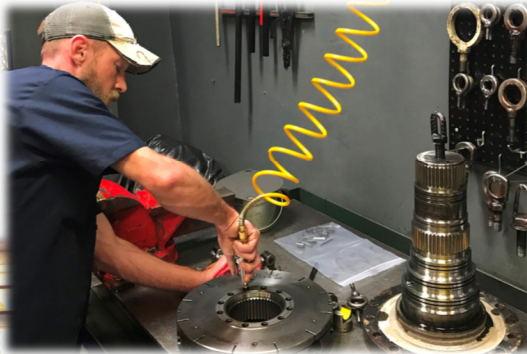
NORTH AMERICAN HYDRAULICS

Solution Providers

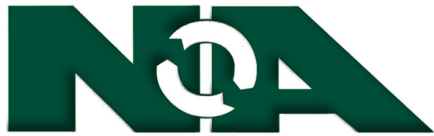


Services Include:

- Authorized Factory Warranty Center
- Full Repair and Reman Services
- Certified Technicians
- Genuine OEM Parts Used
- 100% Hydraulic Testing
- Can Provide Formal Inspection Reports
- In House Machining Capabilities
- Aftermarket Support



NAHI, LLC – CUSTOMER SERVICE • 225-751-0500 • www.nahi.com



NORTH AMERICAN HYDRAULICS

Solution Providers



AMCLYDE

APPLETON MARINE, INC.
Custom Manufacturing. Absolute Quality.

APPLIED 95 YEARS
Industrial Technologies

BELLTEC
Better by Design

BOMAG
FAYAT GROUP

Capital
INDUSTRIAL INC

CATERPILLAR®



Charlton & Hill
the name you can trust

CLARE
CLARE, LLC

C&M McNALLY
TUNNEL CONSTRUCTORS

COASTAL
MARINE EQUIPMENT, INC.

COGAR
MANUFACTURING

DRILLERS MUD
SYSTEMS LLC

FXRUM™
ENERGY TECHNOLOGIES

D

EXODUS
MACHINES

G&Z

FABICK **CAT**

FLSMIDTH

QUALITY MISSABLE
CONCRETE

HOL-MAC
CORPORATION

HYDRALIFT
AMCLYDE

HPE
HYDRA-POWER SYSTEMS, INC.

HPE
HYDRA-POWER SYSTEMS, INC.

Link-Belt
CRANES

IronWolf

LAKE SHORE
SYSTEMS, INC.

LEE STRATHEIT
EQUIPMENT

JOYGLOBAL
P&H JOY

KERSHAW
a division of Progress Rail Services

Knox Kershaw Inc.

KOMATSU

MMI
INTERNATIONAL

LORAM

Manitowoc

Miller
Since 1899

ROADTEC

OLDENBURG
LAKE SHORE

NORCAN

NS
NORTH SHORE

NOV **NATIONAL OILWELL VARCO**

QUADCO **OCEANEERING®**

REXNORD

Schlumberger

SharewellHDD
Downhole Products & Services

SUPERIOR

TADANO
MANTIS
CRANES

SLM SUPERIOR
LIDGERWOOD
MUNDY

TEREX®

Tigercat®

TWO
HARBORS
MACHINE

Robbins

UNI **UNIVERSAL®**
HORIZONTAL DIRECTIONAL DRILLING

UTV
International

Vermeer

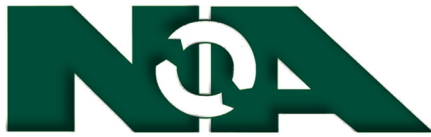
VACUWORX
GLOBAL

VF **VALLEY FABRICATION**
Custom Harvesting Equipment for the Fresh Vegetable Industry

WILCO
MACHINERY

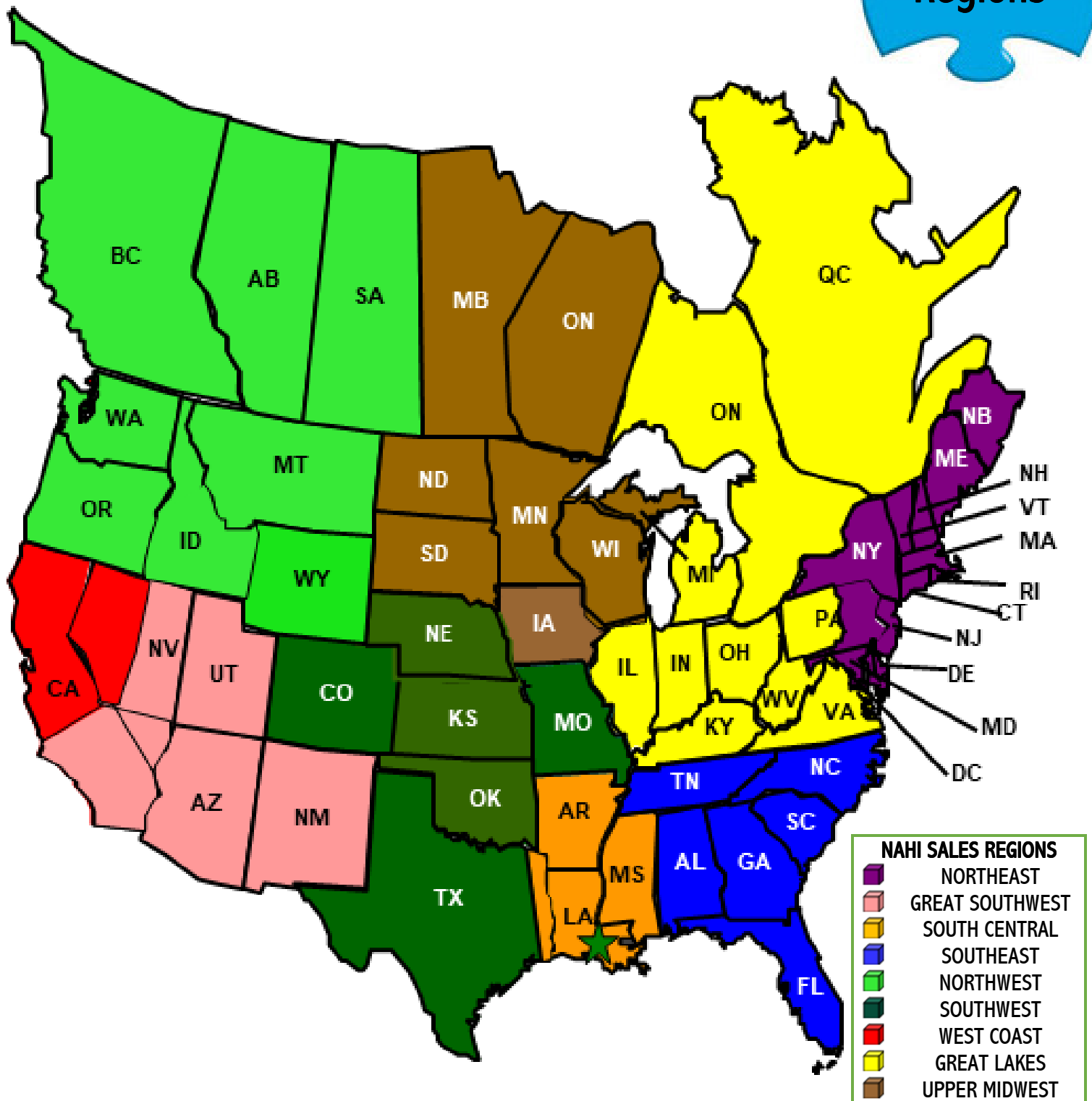
VOLVO
Construction Equipment

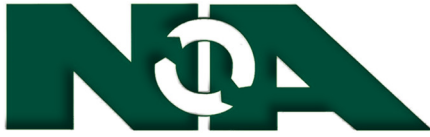
NAHI, LLC – CUSTOMER SERVICE • 225-751-0500 • www.nahi.com



NORTH AMERICAN HYDRAULICS

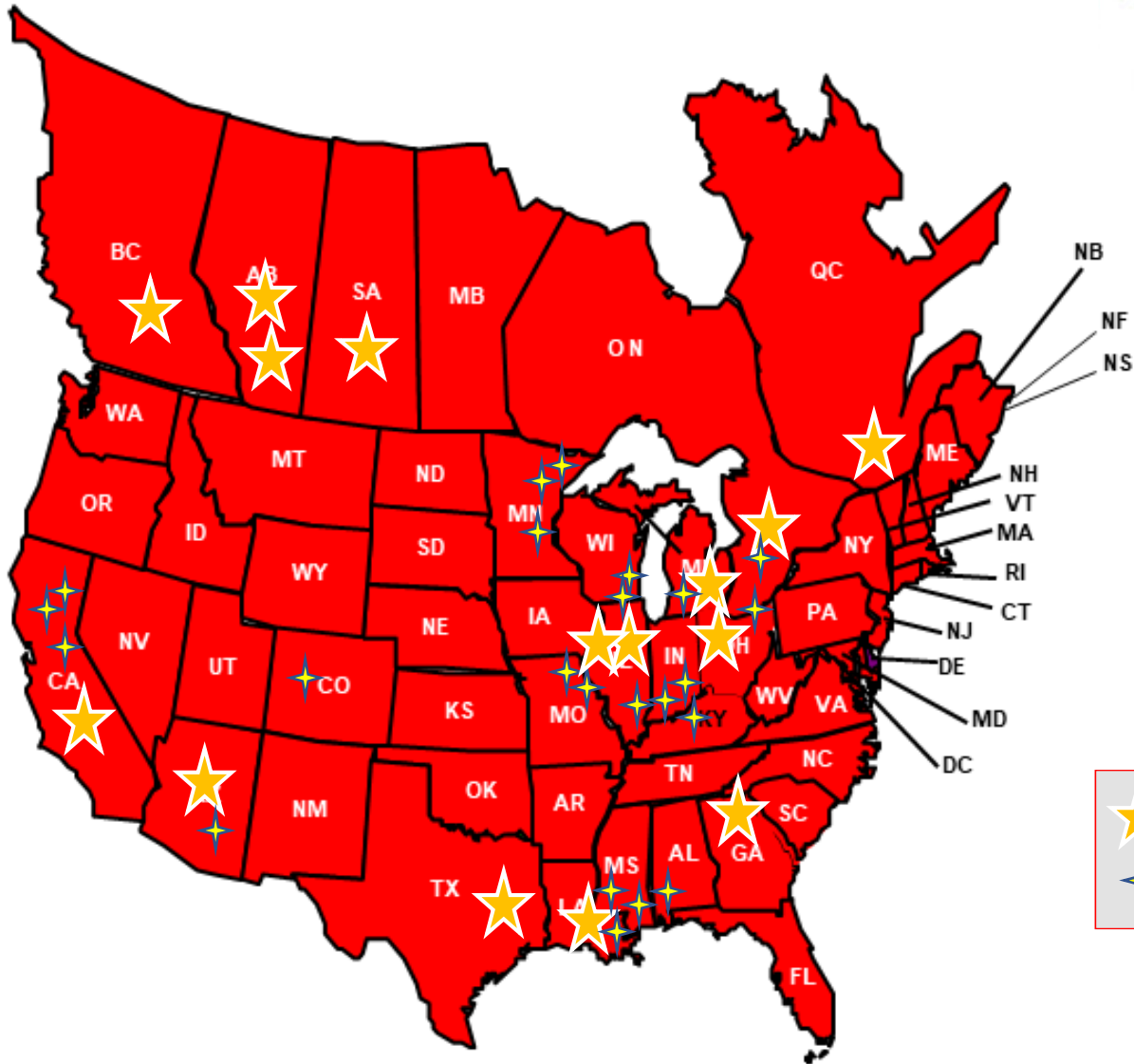
Solution Providers






NORTH AMERICAN HYDRAULICS

Solution Providers





Offices



Field Sales Offices



FLODRAULIC USA



FLODRAULIC CANADA



NORTH AMERICAN HYDRAULICS



OLEOBI HYDRAULIC SYSTEMS



OMNIFLEX



RHM FLUID POWER



SACE



HETRONIC

NA

NORTH AMERICAN HYDRAULICS

Solution Providers





Solution Providers

NORTH AMERICAN HYDRAULICS



American English > SI		SI > American English	
LENGTH		LENGTH	
Millimeter (mm)	= inch x 25.4	Inches (In)	= mm x 0.03937
VOLUME		VOLUME	
Liter (l)	= in ³ x 0.016	Cubic Inches (in ³)	= liter x 61
Liter (l)	= gal x 3.79	Gallon (gal)	= liter x 0.26
DISPLACEMENT		DISPLACEMENT	
cubic centimeters (ccm)	= in ³ x 16.387	Cubic Inches (in ³)	= ccm x 0.06102
FLOW		FLOW	
Liters per minute (lpm)	= gpm x 3.7848	Gallons per minute	= lpm x 0.2642
Cubic centimeters per minute	= gpm x 3784.8	Gallons per minute	= cm3/min x 0.00026
WEIGHT		WEIGHT	
Kilogram (kg)	= pound x 0.4536	Pounds (lb)	= Kg x 2.2046
Newtons (N)	= pound x 4.4482	Pounds (lb)	= Newton x 0.2248
TORQUE		TORQUE	
Kilogram meter	= foot pound x 0.13826	Foot pound (lb-ft)	= Kgm x 7.233
Newton Meter (Nm)	= foot pound x 1.3558	Foot pound (lb-ft)	= Nm x .73756
PRESSURE		PRESSURE	
Bar	= psi x 0.06895	Psi	= bar x 14.5038
POWER		POWER	
Kilowatt (kW)	= hp x 0.746	Horsepower	= kW x 1.351
TEMPERATURE		TEMPERATURE	
Celsius	= (F - 32) / 1.8	Fahrenheit	= (C x 1.8) + 32

225-751-0500
www.nahi.com