



NORTH AMERICAN HYDRAULICS

North American Hydraulics, NAHI, LLC partnering with Geco, Hydrostatically Supported Axial Piston Fixed Displacement Motors.

Features and Benefits:

- High Max Speed of Rotation
- Low Minimum Speed of Rotation
- High Transmittable Power
- High Versatility of Employment
- High Division and Torque Reliability
- High Exercise Pressure
- High Maintainable Radial and Axial Loads
- High Volumetric and Mechanical Efficiency

Proven Solutions for:

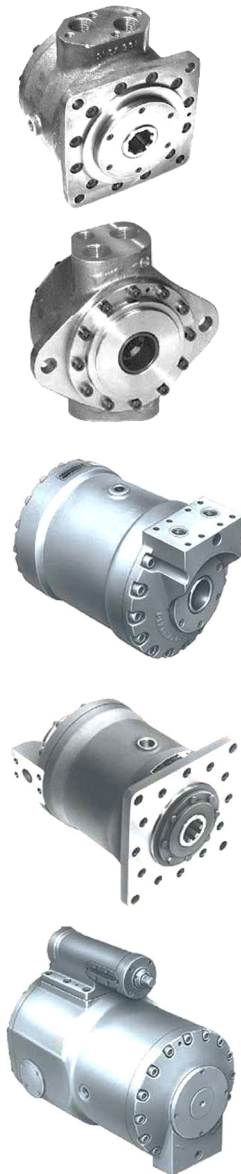
- Agricultural and Mining
- Heavy Iron and Steel
- Road & Railway
- Industrial Winches and Mixers
- Naval Transmissions
- Rubber Extrusion & Molding



Please contact NAHI for additional information.

The above information should be used as a guide and is subject to change without notice.

Please contact NAHI for proper selection.



**Axial Piston Motors
Solution Providers**



Fixed Displacement Motors							
Models	Displacement		Max Speed	Max Working Pressure psi	Max Peak Pressure psi	Torque ft-lbs	
	in ³	cm ³	rpm				
SF	050	3.0	49	10-500	1595	2030	72.3
	075	4.5	73	10-500			108.5
	100	6.0	98	10-500			144.6
	125	7.4	122	10-500			188.0
	150	8.9	146	10-500			217.0
	175	10.4	170	10-500			260.4
200	11.9	195	10-500	289.3			
SF	300	18.9	309	10-400	2030	2610	491.8
	350	21.7	355	10-400			571.4
	400	24.5	402	10-400			651.0
	450	27.3	448	10-300			723.3
	500	30.1	494	10-300			795.6
KF	80	5.1	83	5-1000	3045	3625	195.3
	100	6.8	112	5-1000			267.6
	150	8.6	141	5-1000			340.0
	200	13.4	219	2-900			528.0
	300	17.8	292	2-900			701.6
	450	27.1	444	2-800			1070.5
	700	41.4	679	2-700			1642.0
	1100	67.3	1103	1-400			2661.7
	1450	88.4	1448	1-400			3500.8
	2000	119.0	1950	1-300			4716.0
	2500	150.7	2470	1-250			5967.2
5000	289.9	4750	1-150	11486.0			
HF	100	6.3	103	10-2000	4640	6525	376.1
	200	12.5	205	10-1400			759.5
	300	19.8	325	10-1200			1200.7
	450	28.2	462	10-1100			1700.0
	600	35.9	588	10-1000			2170.0
700	41.0	671	10-950	2438.0			
KV	200	13.9	228	2-1000	3045	3625	549.7
	300	18.4	301	2-1000			723.3
	450	26.9	440	2-800			1048.8
	700	41.2	675	2-800			1627.4
	1100	67.3	1103	1-600			2661.7
	1450	88.4	1448	1-500			3500.8
	2000	119.0	1950	1-450			4715.9
	2800	168.1	2755	1-400			6661.6
5000	290.5	4760	1-300	11486.0			

