

North American Hydraulics, (NAHI, LLC), partnering with Hydro Control, world leaders in the production of hydraulic valves for mobile machinery.

Features and Benefits:

- Quick prompt response rate
- Accurate and stable and not affected by the most diverse operating conditions
- Simultaneous functions never mutually influenced
- Increased energy saving and guaranteed top efficiency levels
- Wide range of available options
- Compact dimensions
- Side by side pre-compensated section with post-compensated section

Proven Solutions for:

- Telehandlers
- Mini-excavators
- Medium and Large Sized Backhoe Loaders
- Forestry Cranes
- Truck Cranes



Please contact NAHI for additional information

The above information should be used as a guide and is subject to change without notice.

Please contact NAHI for proper selection.

Flow Sharing Load Sensing Valves Solution Providers



EX38



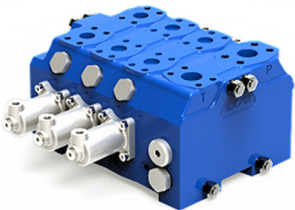
EX46



EX54



EX72



Flow Sharing Load Sensing Valves

GENERAL SPECIFICATIONS	EX38	EX46	EX54	EX72
Working section number	1-10	1-10	1-8	1-8
CIRCUIT				
Spool stroke (mm)	7	7	9	11
Spool pitch (mm)	38	46	54	72
RATED FLOW				
Pump flow rate (l/min)	150	220	300	450
A/B port flow rate (l/min) (*)	100	180	250	350
RATED PRESSURE				
Working pressure inlet port P (bar)	350	350	350	350
BACK PRESSURE MAX				
Max pressure outlet port T (bar)	10	10	10	10
(*) with fixed Pump Inlet compensator				
OPTION CHART	EX38	EX46	EX54	EX72
LS Signal pressure relief valve	•	•	•	•
Pump pressure relief valve	•	•	•	•
LS Signal dump valve (electric 12/24 Vdc)	•	•	•	•
Pump dump valve (electric 12/24 Vdc)	•	•		
SPOOLS TYPE				
Single acting	•	•	•	•
Double acting	•	•	•	•
Float spool	•	•	•	•
SPOOL ACTUATION				
Hydraulic actuation	•	•	•	•
Mechanical lever actuation		•	•	
Mechanical cloche actuation	(•)			
Prop. Electrohydraulic actuation 12-24 Vdc (*)	•	•	•	•
ON/OFF electrohydraulic actuation 12-24 Vdc (*)	•	•	•	•
CAN BUS interface actuation	*1	*1	*1	•
SPOOL RETURN ACTION				
Return spring	•	•	•	•
Mechanical detent	•	•		
Pneumatic control	•	•		
Spools displacement sensor (HLPS)	•	•	•	•
PORT RELIEF VALVE				
Direct operated antishock valve			•	•
Anticavitation valve	•	•	•	•
Pilot operated combined valve			•	•
Direct operated combined valve (fixed setting)	•	•		
Plug	•	•	•	•
*1 in development				
• available				
(•) available on request				
(*) we recommend to keep the T line for the electrohydraulic cartridges separate from the T line of the valve				

