

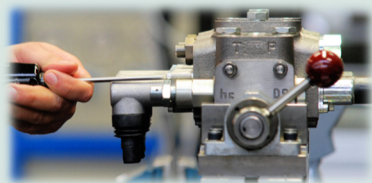
North American Hydraulics, (NAHI, LLC), partnering with Hydro Control, world leaders in the production of hydraulic valves for mobile machinery.

Features and Benefits:

- A large number of options and solutions make the Monoblock Valve a very flexible product:
- Floating function is possible on the standard body
- Available direct electric control push-push type
- Available special circuits for stabilizers applications
- Fork lift set up with potentiometer and microswitches

Proven Solutions for:

- Cranes and Aerial Platforms
- Agricultural Machines
- Mini Skid Loaders
- Mini Dumpers
- Forklifts



Please contact NAHI for additional information

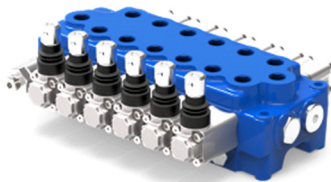
The above information should be used as a guide and is subject to change without notice.

Please contact NAHI for proper selection.

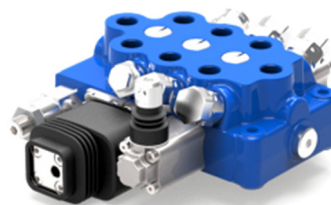
M45



M50



TR55




**Monoblock Valve
Solution Providers**



| Monoblock Valves | | | |
|--|------------|------------|-------------|
| GENERAL SPECIFICATIONS | M45 | M50 | TR55 |
| Working section number | 1-6 | 1-7 | 1-7 |
| CIRCUIT | | | |
| Parallel | • | • | • |
| Tandem | | • | |
| Parallel circuit stroke (mm) | 5 | 5.5 | 5 |
| Float spool extra stroke (mm) | 4 | 4.5 | 4.5 |
| Spools pitch (mm) | 35 | 35 | 36 |
| RATED FLOW | | | |
| Max recommended flow rate (l/min) | 45 | 50 | 50 |
| Max recommended flow rate (GPM) | 12 | 15 | 15 |
| RATED PRESSURE | | | |
| Max working pressure (bar) | 350 | 350 | 350 |
| Max working pressure (PSI) | 5000 | 5000 | 5000 |
| OPTION CHART | M45 | M50 | TR55 |
| Direct acting pressure relief valve | • | • | • |
| Clamping valve | | | (*) |
| Externally piloted valve | (*) | (*) | |
| Solenoid dump valve (12 Vdc) | (*) | (*) | |
| Solenoid dump valve (24 Vdc) | (*) | (*) | |
| SPOOL ACTUATION | | | |
| Manual control | • | • | • |
| Without lever | • | • | • |
| 90° joystick control | • | • | • |
| Hydraulic control | | • | • |
| Direct electric control (12-24 Vdc) | | • | |
| SPOOL RETURN ACTION | | | |
| Return spring | • | • | • |
| Detent in A - in B - in A/B | • | • | • |
| Detent in 4 th position | • | • | • |
| Arrangement for dual control | • | • | • |
| Hydraulic load limit | • | • | • |
| Pneumatic control ON - OFF | • | • | • |
| Proportional pneumatic control | • | • | • |
| Electrical load limit | • | • | • |
| Electrohydraulic control ON-OFF (12-24 Vdc) | • | • | • |
| Electrohydraulic control PROP. (12-24 Vdc) | • | • | • |
| Electropneumatic control (12-24 Vdc) | • | • | • |
| AUXILIARY VALVES | | | |
| Valves on port | | • | • |
| (*) the application requires special machining in the body | | | |

