

North American Hydraulics, (NAHI, LLC), partnering with NACHI in Mobile Piston Pumps for compact construction machinery applications.

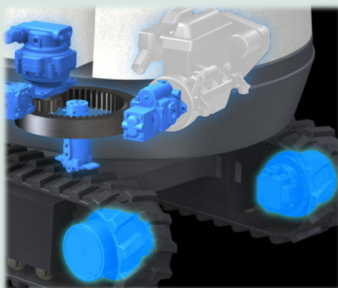


Features and Benefits:

- Model PVS Series:
 - Low noise
 - Low pulsation
 - Load sensing control
 - Tandem pump control
- Model PVD Series:
 - One pump discharges two equal amounts of flow to ensure shovel straightness
 - Constant horsepower control with full use of engine horsepower, resulting in increased speed and power for the mother machine

Proven Solutions for:

- Construction Equipment



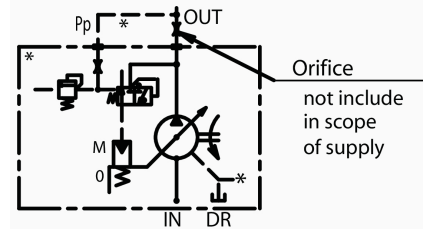
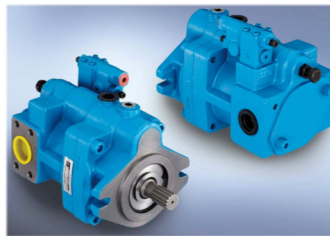
Please contact NAHI for additional information.

The above information should be used as a guide and is subject to change without notice.

Please contact NAHI for proper selection.

PVS Series – Variable Displacement Piston Pumps

| Model | Maximum Displacement cm ³ /rev | Maximum Pressure psi | Maximum Speed rpm | Rated Speed rpm | Minimum Speed rpm | Primary Shaft | Primary Mounting Flange | Weight lbs | Rotation |
|-----------|---|----------------------|-------------------|-----------------|-------------------|---------------|-------------------------|------------|----------|
| PVS-0B-8 | 8 | 3626 | 2340 | 2000 | 500 | 9T-0.625" | "A"2B | 17 | RH |
| PVS-1B-16 | 16.5 | | | | | | | 23 | RH |
| PVS-1B-22 | 22 | | | | | | | 23 | RH |
| PVS-2B-35 | 35 | | | | | 11T-0.75" | "B"2B | 46 | RH |
| PVS-2B-45 | 45 | | | | | 15T-1.00" | "B"2B | 46 | LH |



PVD Series – Split Flow Piston Pumps

| Model | Maximum Displacement cm ³ /rev | Maximum Pressure psi | Maximum Speed rpm | Rated Speed rpm | Minimum Speed rpm | Primary Shaft | Primary Mounting Flange | Weight lbs | Rotation |
|---------|---|----------------------|-------------------|-----------------|-------------------|---------------|-------------------------|------------|----------|
| PVD-00B | 8x2 | 3550 | 2800 | 2600 | 900 | 13T-7/8" | "B"2B | 20 | RH |
| PVD-0B | 12x2 | | 2800 | 2600 | | | | 28 | RH |
| PVD-1B | 17x2 | | 2700 | 2500 | | | | 33 | RH |
| PVD-2B | 22.5x2 | | 2600 | 2400 | | | | 44 | RH |
| PVD-3B | 33x2 | | 2400 | 2200 | | 15T-1.00" | "C"2B | 59 | RH |

