

North American Hydraulics, (NAHI, LLC), partnering with Black Bruin, LTD; offering Power On-Demand Drive Systems designed for Mobile Applications

Features and Benefits:

- Safe and Reliable — Automated functions and self-diagnostics ensure the correct operation of the system. System also includes protection against connection failures.
- Smooth Drive Control — Functions for various operating situations: Driving direction selection, tractive power adjustment, speed range control, freewheeling and assisting traction control (ATC).

Proven Solutions for:

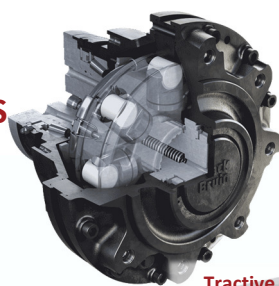
- Earth-moving trailers, hooklift trailers, peat wagons
- Agriculture
- Forestry trailers, wood chippers
- Slurry tankers, trailed sprayers and fertilizers, silage wagons, grain carts, root crop harvesters, balers
- Tractive power in harsh conditions and varying terrain
- Transmission solution for tractor-driven trailers and working equipment



Driving on slippery or soft surfaces



On-Demand Drive System Solution Providers



Tractive Power Always When Needed
Freewheeled Without Active Hydraulics



Valve
2WD / 4WD



Radial piston
hydraulic motor



Control device



Display

ATC

Assisting traction
control function

CTR101

Manual drive control

Whether you drive off-road or on-road, the CTR101 control system functions for various operating situations:

Driving direction selection, tractive power adjustment, speed range control, freewheeling and assisting traction control (ATC).

The user controls the systems functions and gains information on its operation via the display which has the same updated and user-friendly interface as on the CTR201. Automated functions and self-diagnostics ensure the correct operation of the system. System also includes protection against connection failures.

CTR201

Smoother drive control

The CTR201 control systems utilizes the tractor's ISOBUS, simplifying the operator's work significantly and offering unbeatable practicality. ISOBUS provides the system with all the data needed to control the trailer's wheel motors, such as the tractor's direction and speed.

The display makes it easy to select the desired drive power, after which the trailer automatically pulls in the same direction and at the same speed as the tractor.

When accelerating, the operator does not have to disengage drive, as the system automatically does so at high speeds. If required, the operator can also disengage the automatic system and control the trailer's drive manually.

HDC Hill descent control function



Driving up steep hills



Reversing on steep hills

Black Bruin

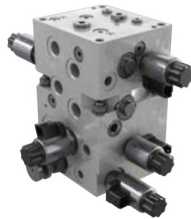
No power like it.

Specifications

Control systems / Valves



Control system	CTR101	CTR201
Driving direction selection	Manual	Automatic
Tractive power (pressure level) adjustment	Manual (25/50/75/100 %)	Manual (25/50/75/100 %)
Speed range control (shifting to 1 or 2-speed)	Manual	Automatic
Freewheeling (disengaging the drive)	Automatic	Automatic
Engaging the drive	Manual	Automatic
Assisting traction control (ATC)	•	•
Control for external valve (AUX)	•	•



Valve model	CVM120 / 2WD	CVM120 / 4WD	CVU200 / 2WD
Max. pressure level [bar]	350	350	350
Max. flow rate [l/min]	120	120	200
Operating voltage	12 V DC	12 V DC	12 V DC
Compatible pump	Load-sensing (LS) or fixed displacement	Load-sensing (LS) or fixed displacement	Load-sensing (LS)
Functions	Driving direction selection, tractive power adjustment, speed range control, freewheeling and assisting traction control (ATC).		

Key Benefits of the System:

Less soil damage and compaction
 Less tractor power required – Lower fuel consumption
 No ploughing effect or hauling of dead weight
 Improved steering ability



Crossing obstacles

Black Bruin
 No power like it.